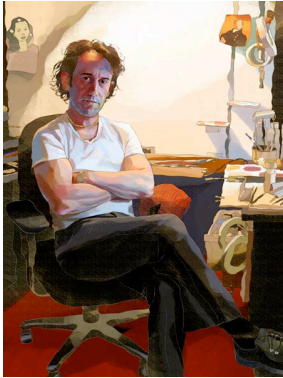


## Internet Scavenger Hunt

Name:

Paste your images (photograph or fine art / 2D or 3D) you find from an internet search after each statement. Make sure you include the artist's name/or website to their gallery. These images may come from art history. I have provided the first example.

1. Find 3 images from different artists that emphasize **LINE** (style) in the art.



- A. Zina Saunders - Illustrator

<http://www.zinasaunders.com/pages/contact/index.html>

- B.

- C.

2. Find 3 images from different artists that use **SHAPE** as it's dominate feature.

- A.

- B.

- C.

3. Find 3 images from different artists that use **TEXTURE** as it's dominate element.

- A.

- B.

- C.

4. Find 3 images from different artists that use **FORM** as it's dominate element.

- A.

B.

C.

5. Find 3 images from different artists that use **COLOR** as it's dominate element.

A.

B.

C.

6. E. Find 3 images from different artists that use **VALUE** as it's dominate element.

A.

B.

C.

7. Find 3 images from different artists that use **SPACE** as it's dominate element.

A.

B.

C.

8. Show different examples of **FOCAL POINT** placement from 3 different artists.

A.

B.

C.

9. Find 3 images from (different artists) that **REPEAT** certain elements in their artwork to establish **UNITY**. (Note: repetition, rhythm and pattern are slightly by distinctively different.)

A. **Repetition** (of any element)

B. **Rhythm** (uses variety within its repetition)

C. **Pattern** (no deviation )

10. Find 3 images from different artists that use the different types of **BALANCE** as it's dominate element.

A. **Symmetrical:**

**B. Asymmetrical:**

**C. Radial:**

11. Find 3 images from different artists that use **MOVEMENT** as it's dominate element.

A.

B.

C.

12. Find 3 images from different artists that use **CONTRAST** as it's dominate element.

A.

B.

C.

Andrea.burris@isd742.org